

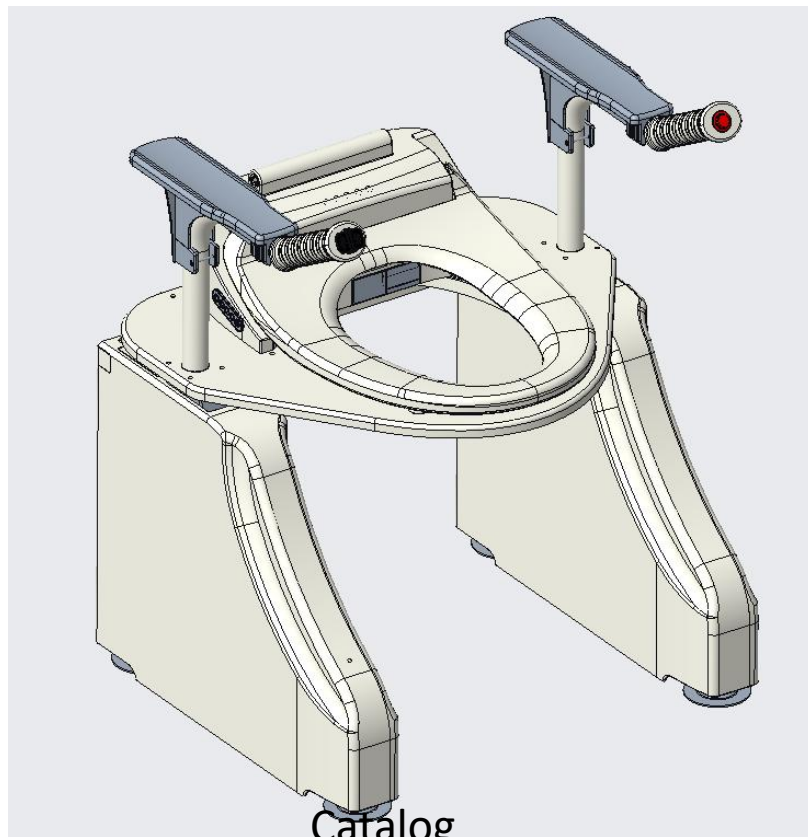
Toilet Lift Chair

SLD Toilet Lift Seat

# Product Installation Instructions

Product Model: **SLD-TL-18A-W Washlet model**

Executive Standard: QS-2018-TL-A-VA



Catalog

## 1. Packaging and Components

2. Using the installation
3. Adjustment of support feet
4. Fixation with the toilet seat
5. How to use the host button
6. Technical Specifications
7. Warranty card and after-sales service

**Note: No water supply power to this product until**

#### 1 Packaging and components

Open the package, check if all parts are complete, make sure there is no damage, if there are parts missing or damaged please contact the supplier.

Package contains.

Toilet aid lift chair body A

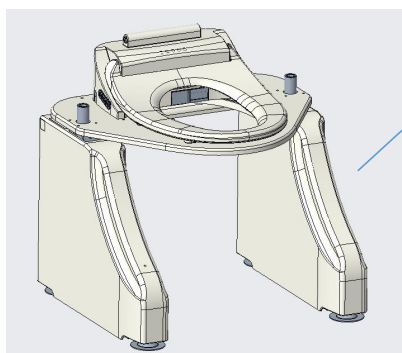
Handrail B

Handrail C (switch)

Water pipe tee connector D, water inlet hose E

Installation tool bag (with screws for fixing handrails, hexagonal wrench)

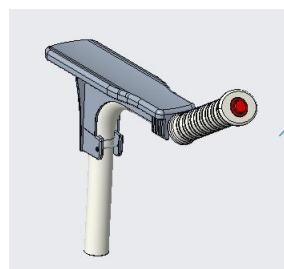
Certificate of Conformity and product instruction manual



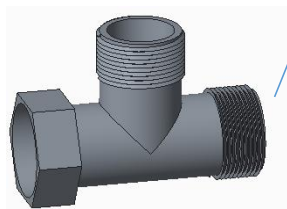
Toilet aid lift chair body A



Handrail C



Handrail



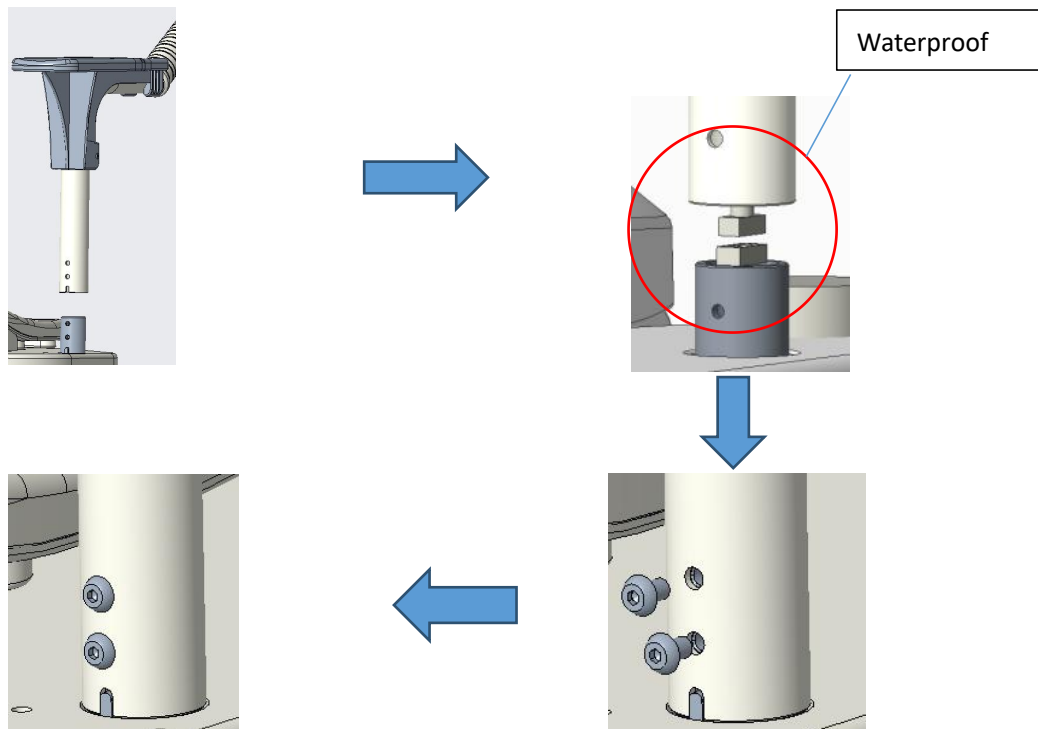
Water pipe tee



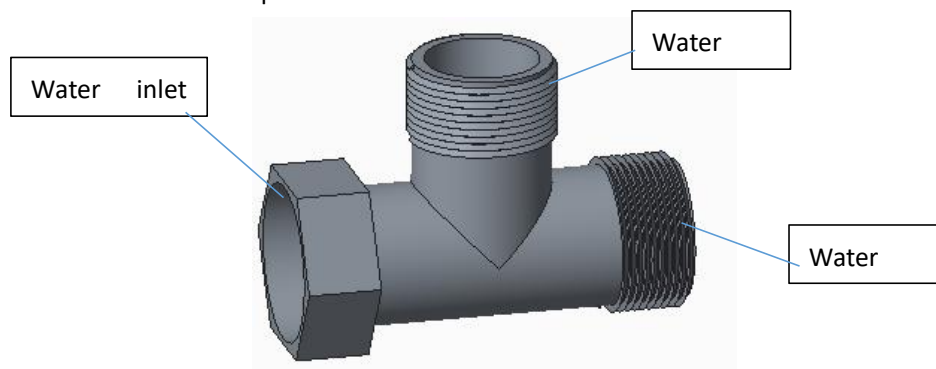
Water inlet

## 2 Using the installation

Connect the armrest to the main body of the lift chair, install the waterproof plug with the socket in the column in alignment, and lock the armrest using the screws equipped in the installation tool bag.

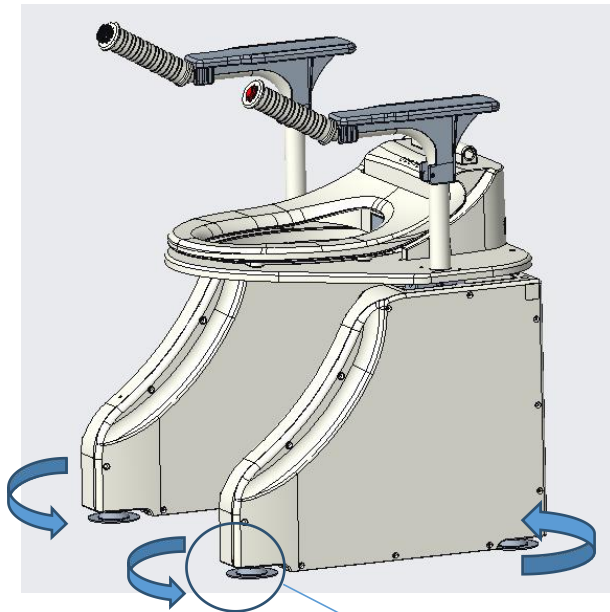


Connect one end of the inlet hose E to the three-way valve and the other end to the water inlet of the box. The remaining two ends of the three-way valve are connected to the toilet bowl tank at one end and to the tap water valve at the other end.



### 3 Adjustment of the support foot

The unit is shipped with all 4 support feet adjusted to the minimum height. The installer uses the soft ruler in the installation tool bag to measure the height of the upper edge of the ceramic base of the toilet from the ground, and then adjusts the height of the rear beam of the unit to about 1cm above the upper edge of the ceramic base of the toilet by rotating the unit's support feet to avoid contact between the unit and the toilet.



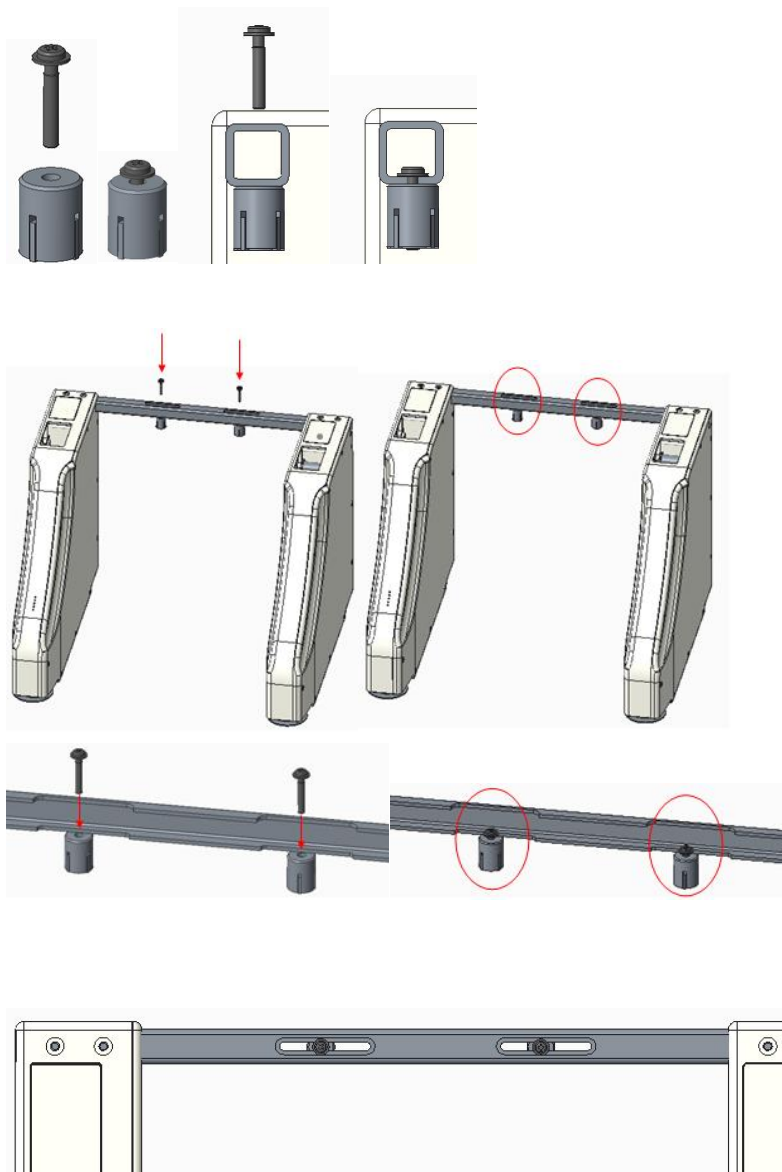
The support feet have 4, which can be rotated to adjust the height of the support feet, thus adjusting the overall

Note: Make the device stable by adjusting the 4 support feet to ensure that the lap cover surface is in a horizontal position, and also ensure that the height of the outermost lower edge of the device seat is higher than the upper edge of the

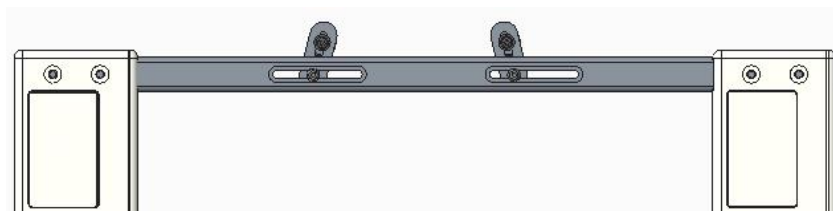
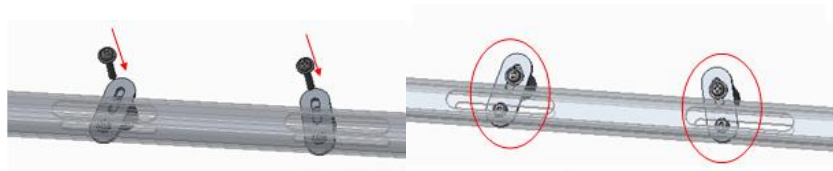
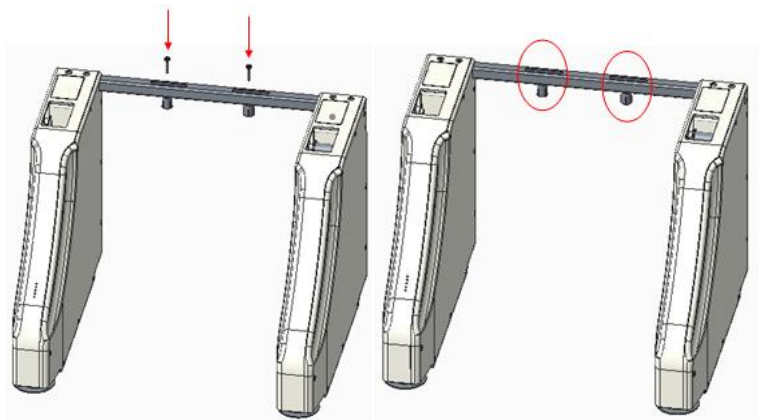
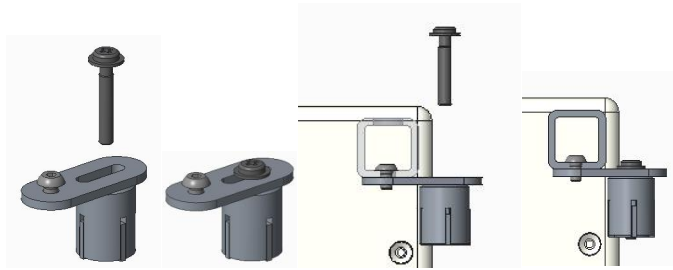
#### 4 Fixed with the toilet seat

- 1) Remove the toilet seat cover and its fixing screws, retaining only the ceramic substrate of the toilet seat
- (2) Lift the equipment (seat to the lowest state) and move it to the top of the toilet and then slowly put it down to ensure that the equipment seat does not touch the toilet.
- 3) Periodically check the correct position of the equipment on the toilet to avoid collision or jamming of the equipment with the toilet in the process of use.
- (4) For users with poor body balance and self-control, the fixing bolts must be used to fix the fixing beam of the main body of the equipment A with the installation hole of the toilet seat to prevent the user from falling sideways.

#### Fixing method 1: (bolt direct fixing)



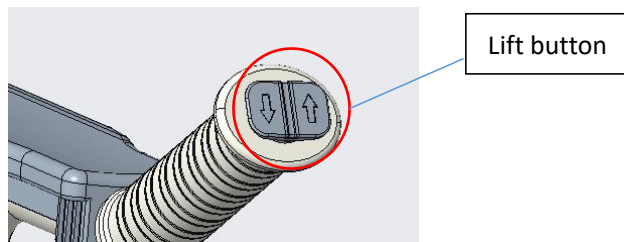
Fixed way 2: (for the special situation of the toilet hole position, use the extension piece to adjust the distance after fixed)



5 Host button usage (please refer to the smart toilet cover manual for flushing and cleaning)

function)

The lift control switch of the equipment is located in the front of the handrail, the user continuously presses the left and right control keys to control the rise and fall of the equipment, release the switch the equipment stops running.



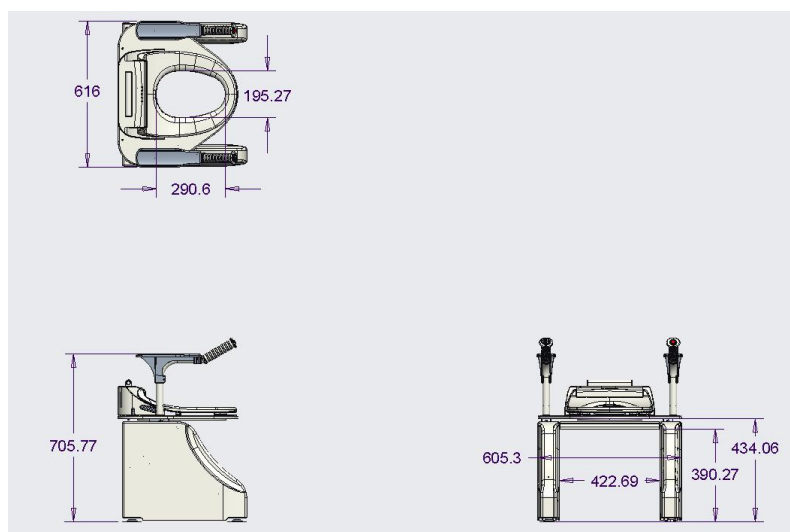
Lift button

Note: No water supply power to this product until installation is

#### 6 Technical specifications

Rated voltage and frequency	AV220V 50Hz
Power Rating	1150W
Waterproof grade	IPX4
Operating ambient temperature	3~40° C
Water supply temperature	4~35° C
Water supply pressure	0.07~0.7MPa
Hot water temperature	34~40° C
Hot water heating power	1250W
Heated seat surface temperature (maximum)	36~42° C
Seat heating power	50W
Warm air temperature	40~50° C
Warm air heating power	250W
Maximum load capacity	200kg
Product weight	About 22KG

#### Product Size





## 7 Warranty card and after-sales service

### Warranty Card

User Profile Year Month Day

User Name		Gender		Age	
Contact number			Zip code		
Where to buy.					

#### Warranty Terms:

1. Within three months from the date of sale of goods, if a performance failure occurs, the goods themselves and the outer packaging must remain intact and free of scratches, and may be replaced with the same type of goods, (subject to inspection) but not including perceived damage.
2. Goods from the date of sale warranty for one year, lifetime maintenance, accessories are not included in the warranty.
3. The warranty is valid only under normal use.
4. All man-made damage, self disassembly, unsealing mark, improper use of all exterior damage, not in the scope of the warranty, warranty must provide this card, failure to provide this card or private alteration of this card, the company has the right to make non-warranty treatment.