

User Manual for CP Walker

Model: **MN04977L**



Please read this manual carefully before using our products to ensure correct use and safety.

Version: A/0

CONTENT

USER MANUAL OVERVIEW	2
PART I:RANGE OF APPLICATION AND PRECAUTIONS.....	2
(I)RANGE OF APPLICATION	2
(II)SAFETY PRECAUTIONS	2
PARTII:FUNCTION OVERVIEW AND USE INTRODUCTION.....	3
(I)NAME OF PARTS	3
(II)INSTALLATION OF WALKER	4
(III)PLACEMENET OF WALKER	6
(IV)OVERVIEW OF FUNCTION AND USAGE	6
(V)USE METHOD & OPERATION STEP	7
(VI)PRECAUTION & WARNING	8
(VII)CLEANING & DISINFECTION FOR WALKER	9
(VIII)WALKER MAINTENANCE	9
(IX)CONDITION & METHOD FOR STORAGE	10

User Manual Overview

This user manual is applicable to the multifunctional walker for children with cerebral palsy, including various safety precautions, function descriptions, maintenance and other information.

Product Specification:

No.	Length	Width	Height	Wheel	Loading	Tall of User	N.W.
1	80cm	69cm	68-80cm	4"	30-35kg	100cm-140cm	15kg

The graphics in this manual are for user reference only, please refer to the actual product for actual use.

Part I: Range of Application & Precautions

(I) Range of Application

This product is suitable for children with cerebral palsy to carry out walking training to prevent muscle atrophy and enhance muscle strength. Can prevent or improve osteoporosis, pressure sore, reduced heart function and other diseases.

(II) Safety Precautions

- Be sure to read the Safety Precautions carefully before use for correct use.
- If fail to the instructions in the user manual, the product may be damaged, people may be injured, and even life may be involved.
- In cases where the patient or a family member is required to operate a walking aid directly, the doctor or nurse should fully explain the appropriate use method for the patient's symptoms before allowing the aid to be used.
- Before using the walking aid, the rehabilitator should check whether the equipment is placed on the ground, without shaking phenomenon, read the product instructions in detail, be familiar with the product performance, requirements and operation methods, and carry out no-load operation inspection of the product, the product is in good condition before use.
- Patients should be trained to walk on their feet with the help of a rehabilitator or nursing professional.
- The walking aid training should follow the principle of "step by step" and gradually increase the training time.
- During walking aid training, the straps used by the patient must be fitted firmly and not loose.

Any of them are important content related to safety, please be sure to follow them.

* After reading the user manual, it should be kept in a place where it can be seen at all times.

Part II : Function Overview and Use Introduction

The multi-functional walking aid adopts a modular design, which is composed of a main structure and a multi-functional modularization. Each module can be used alone or at the same time. The main module components are shown in (figure 1).

(I) Name of Parts

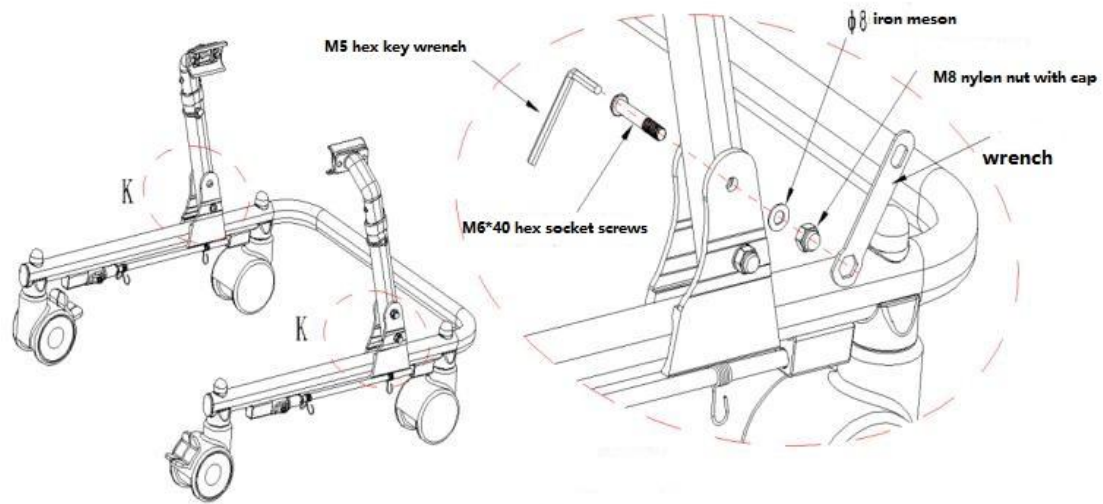


(figure1)

*The actual object may be different from the above pictures, please refer to the actual object.

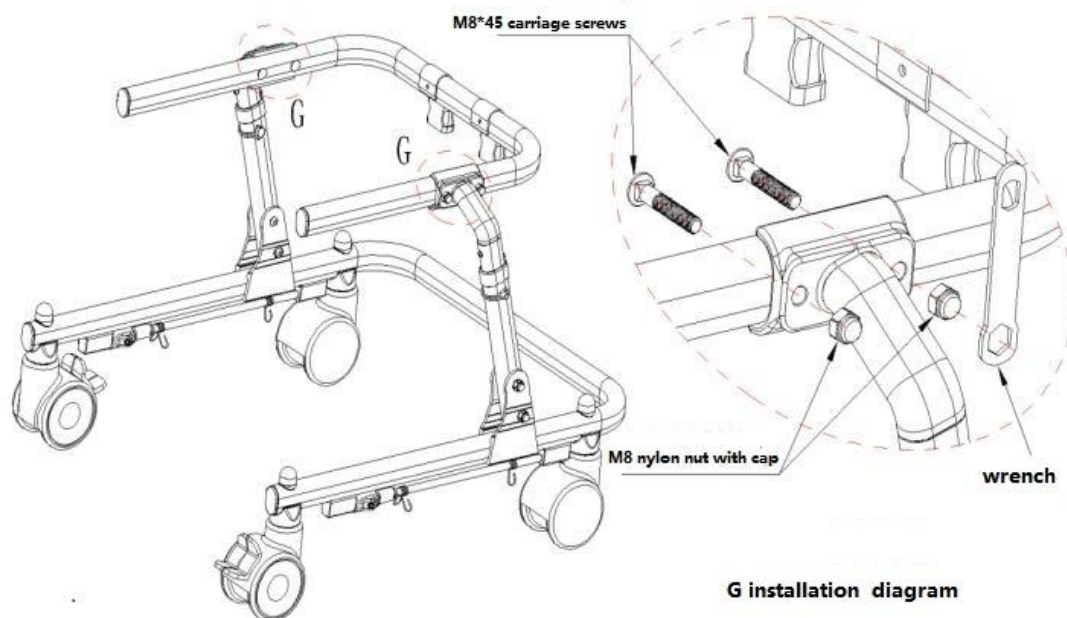
(II) Installation of Walker

1.Adjustable Tube Installation



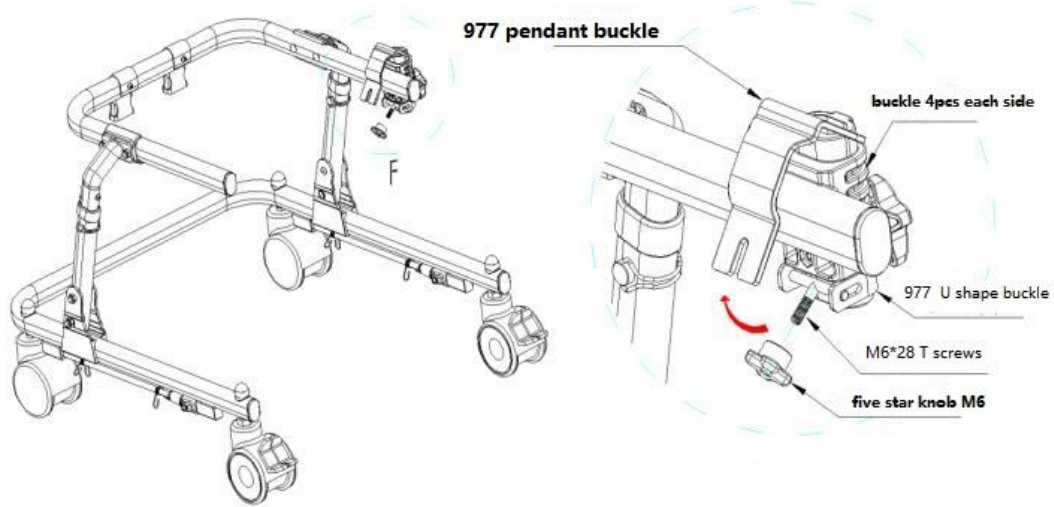
K installation diagram

2.Support Tube Installation



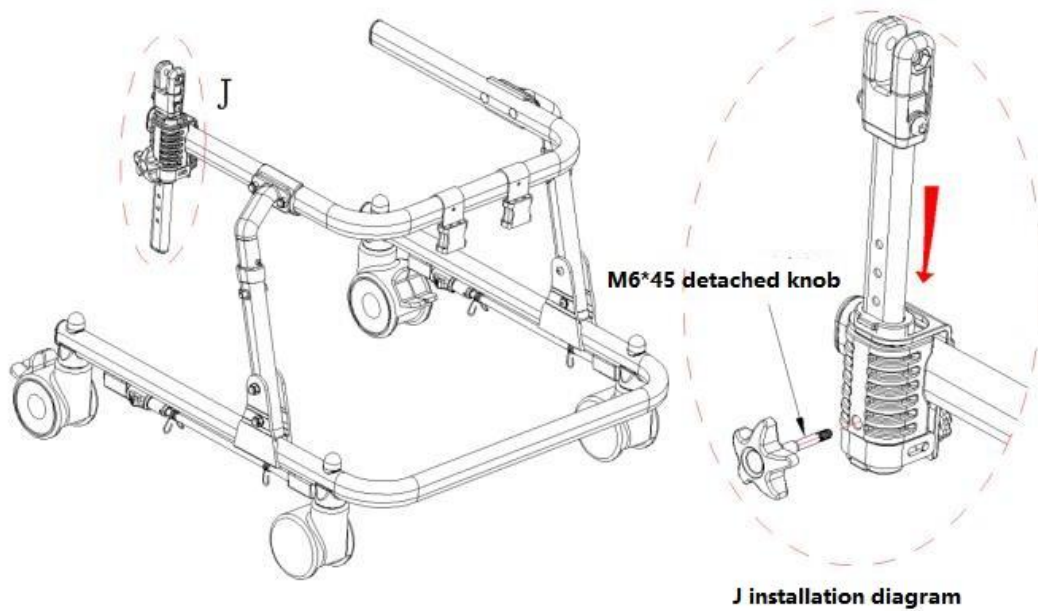
G installation diagram

3.Installation of Pendant Buckle

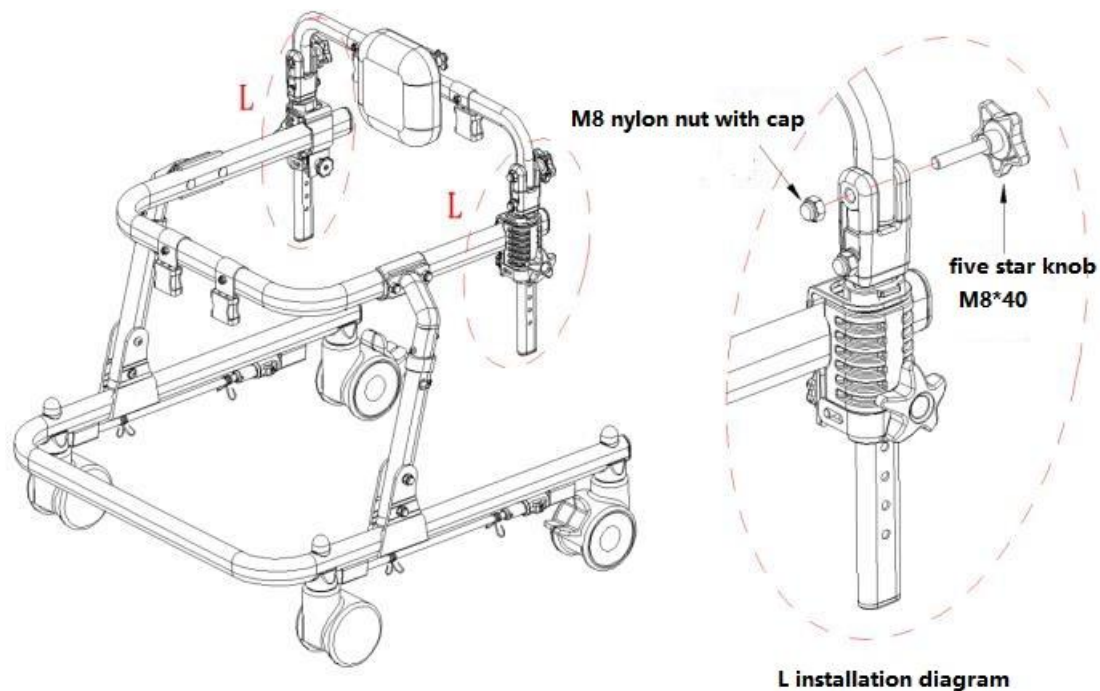


F installation diagram

4.Installation of Pendant Buckle



5.Backrest Cushion Installation



(III) Placement of Walker

Improper placement of the walker is the cause of malfunction, so please avoid places where:

- Places exposed to direct sunlight.
- In the vicinity of heating appliances such as stoves and heaters.
- A place subject to excessive water vapor and oil vapor.
- Places with high temperature, high humidity and low temperature.
- A place with a lot of dust, smoke, dust, salt, sulfur, corrosive substances, etc.
- Places with poor ventilation.
- A place subject to vibration and shock (including during transportation).
- Where the ground is not solid.
- The ground is not level.

(IV) Function Overview & Usage

The multi-functional walking aid is a kind of special rehabilitation equipment for patients who cannot control their hands and feet when walking through exercise. After repeated training, they

can walk independently. During use, it can help children improve the blood circulation of the whole body, enhance the upright function of the lower limbs, and improve the mobility of each joint of the whole body. This device is used for patients with walking difficulties and uncontrolled hands and feet, and has a good rehabilitation effect on patients with cerebral palsy, hemiplegia and polio.

(V) Use Method & Operation Step

1. According to the requirements of the installation method, complete the installation of each functional module group, and adjust the main body according to the user's body shape. The high and low positions of the frame, elbow rest pad, waist support pad and leg support belt, and be firmly fixed in the correct position.

2. Lift the backrest group after tightening the backrest group knob

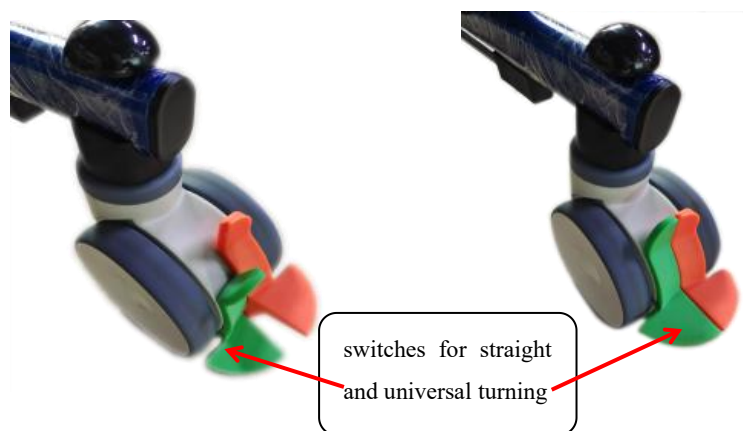
3. The user is assisted into the walker frame.

4. The user should be helped to stand and fix the elbows, waist, and legs with straps and close the backrest group.

5. During the exercise process, the rear wheel can be switched to go straight or universally at any time, and it can also be used for functional coordination training of palm and finger grip.

(5.1) Conversion between straight travel and universal direction of walker

In the process of using the walker, if go straight ahead, only need to press down the wheel straight switch with the feet, and the walker can go straight, as shown in (figure 5-1), press the wheel up to It can rotate 360 degrees universally, as shown in (figure 5-2).



(figure5-1)

(figure5-2)

6. When have short rest, install a seat cushion after sitting down to rest in the case of parking.

(6.1) How to park the walker

Just press down the wheel parking switch with your foot to park, as shown in (figure 6-1).



7.The optional meal board can provide users with temporary drinking and eating.

8.After the walking training, the rehabilitation therapist and nursing staff should untie the fixed straps, loosen the knob of the backrest group and lift the backrest group to help the patient move out of the walker.

(VI) Precautions & Warnings

1. Walkers should not be placed on uneven ground.

2.Walkers must be adjusted to the child's height.

3.When using a walker, the legs are best secured with straps, the purpose of which is to help children straighten their legs.

4.Children's feet should be flat on the ground.

5.The straps on the walker should be secure and secure.

6.If the patient's trunk balance ability is poor, the waist side panel, rear panel and straps on the walker can be fixed to the patient to prevent the patient from leaning back and forth.

7.The ankle connection belt on the walker can control the step distance of the child through the button spring on the slide bar.

8. During use and movement, keep it firm and handle it with care to prevent bumps and smashes. After the device has been used for a certain period of time, it should be regularly inspected and maintained. If the continuous screw is found to be loose, it should be adjusted in time to prevent damage to the device and unsafe accidents.

9. The training of walking aids is a good exercise activity. Parents should learn how to use them correctly, which is very beneficial to children with cerebral palsy.

(VII) Cleaning and Disinfection for Walker

Note: This product is not suitable for cleaning with "jet" washers or high pressure/steam.

Cleaning for Walker:

1. For thorough cleaning and post-cleaning inspection, raise the walker to its highest position.
2. When cleaning, use a cloth soaked in diluted neutral detergent to wring out and then scrub, then use a cloth soaked in clean water to wipe off the residual detergent after wringing out, and finally dry it with a dry cloth.
3. Please do not use volatile items for cleaning, such as thinner, volatile agent, gasoline, etc., otherwise it will cause discoloration or deterioration of the material.

Disinfection for Walker:

1. When using disinfectants, please dilute them according to the specified concentration of the following disinfectants before use:

- | | |
|-----------|---------------------------------|
| 0.05-0.2% | ammonium chloride disinfectant |
| 0.05-0.2% | chlorinated phenyl disinfectant |
| 0.05% | dichlorohexidine ethane liquid |

1. Depending on the disinfectant, it may cause corrosion of metal parts, or discoloration, deterioration, and cracking of plastic parts, so please use the disinfectant recommended above.
2. Please confirm the composition of the disinfectant before use.
3. After disinfection, please wipe off the disinfectant.
4. Ozone and autoclaves should not be used as sterilizers.

(VIII) Walker Maintenance

1. Under normal use of this product, the structural function and safety inspection shall be carried out every six months.
2. This product will not generate waste, but the damaged parts that have been replaced may cause harm to the human body, so they should be cleaned out of the sick area and handed over to the waste recycling department for disposal.

3.Suggestion for this product: Clean and disinfect every time a user is changed or every use cycle (3 months) when major pollution occurs, and disinfectants can be used. It is forbidden to use chemically harmful, corrosive and radioactive disinfectants such as acid and alkali to clean this product.

4.Do not disassemble or disassemble this product without the consent of authorized personnel.

(IX) Condition and Method for Storage

The packaged stand should be stored in a ventilated, dry, cool room away from heat sources and without corrosive gases. During transportation, it should be protected from moisture, light, and heat sources.